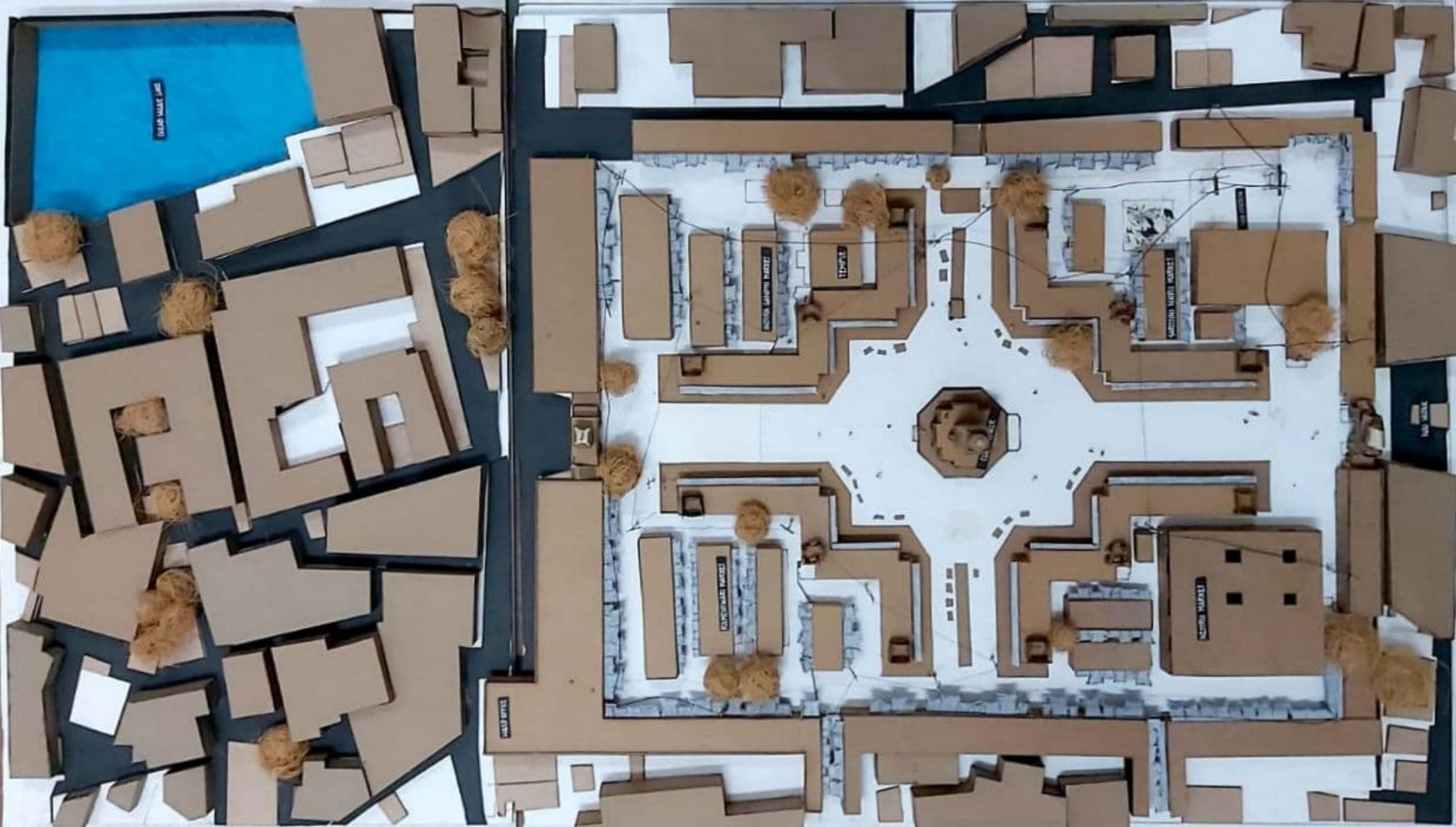
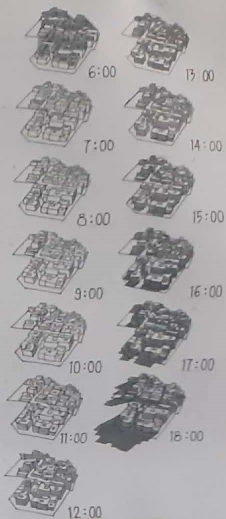


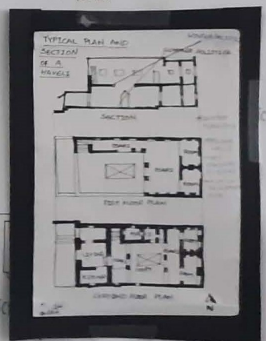
N







WALL SECTION

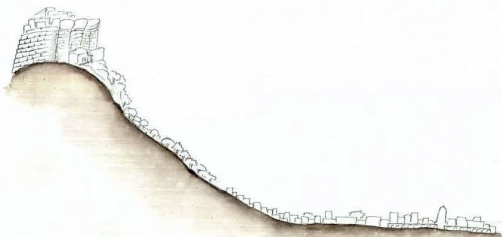


TYPIC

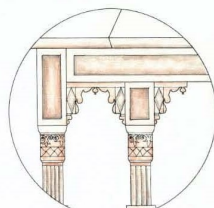
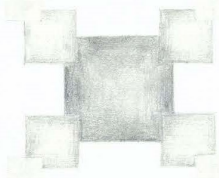


PLAN

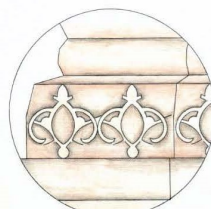
SCALE - 1:250



THE FOLLOWING DIAGRAM REPRESENTS THE INTERRELATION BETWEEN THE SARKAR MARKET AND THE GIRIPKOT MARKET. CLOCK TOWER ACTS AS THE PRIME ATTRACTION OF JOYBAHAR WHICH FURTHER ADDS VALUE TO THE COLONIAL SQUARE. THE GIRIPKOT MARKET CONFINES SARKAR MARKET ACTING LIKE THE PERIPHERY, THUS APPRECIATING SARKAR MARKET.

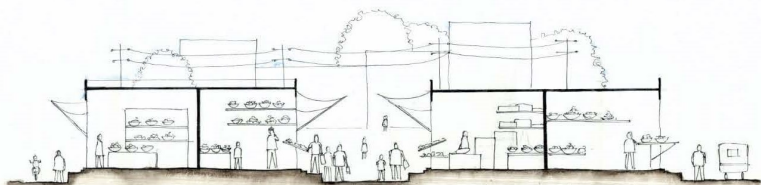
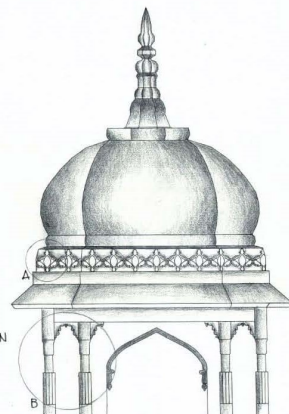


PETALS AT B

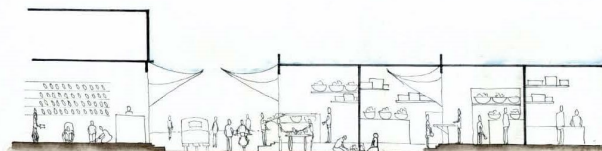


DETAILS AT A

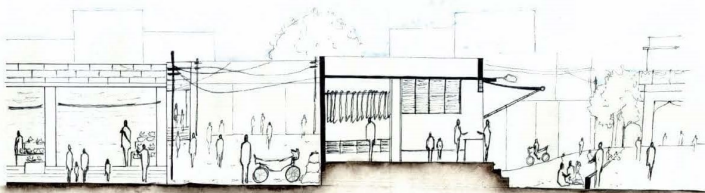
REPRESENTING THE ORNAMENTATION OF CHATRI.



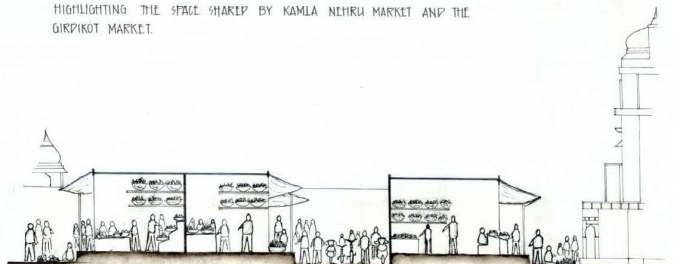
FOCUSING THE ACTIVITIES CARRYING OUT IN VEGETABLE MARKET.



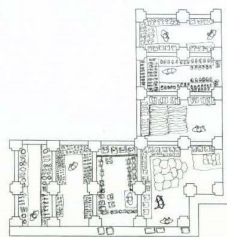
HIGHLIGHTING THE SPACE SHARED BY KAMLA NEHRU MARKET AND THE GIRIPKOT MARKET.



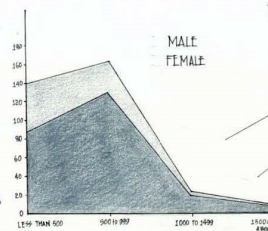
REVEALING THE CONNECTION OF BUILT SPACE WITH THE OPEN AREA EMPHASIZING THE RELATIONSHIP BETWEEN SHOPKEEPERS AND VENDORS.



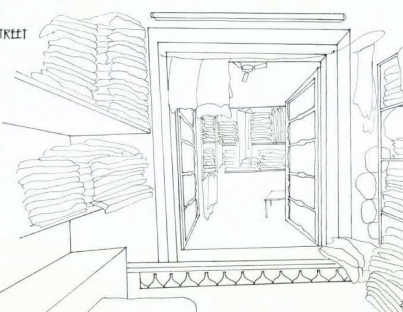
HIGHLIGHTING THE SPACE BETWEEN NON RENTED SHOP AND CLOCK TOWER MARKET CONNECTED BY THE SECONDARY BY STREET (SHYAMA GALI (1)).

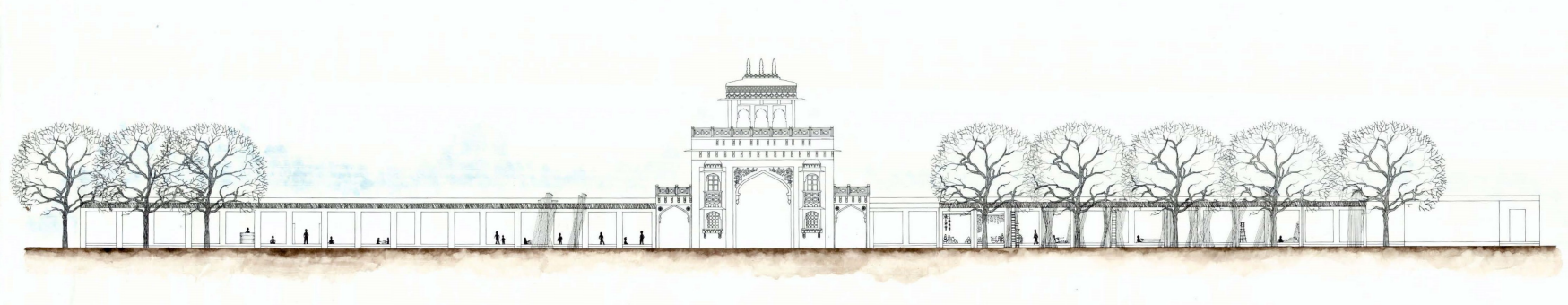


MALE (75+) FEMALE (27+)  
STREET VENDORS IN GHANTAGHAR BY GENDER.



GENDER WISE AVERAGE DAILY INCOME





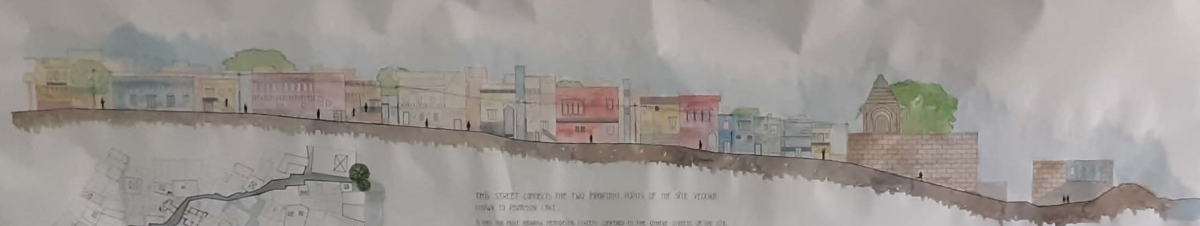




SECTION FROM JERUSALEM TO JERUSALEM

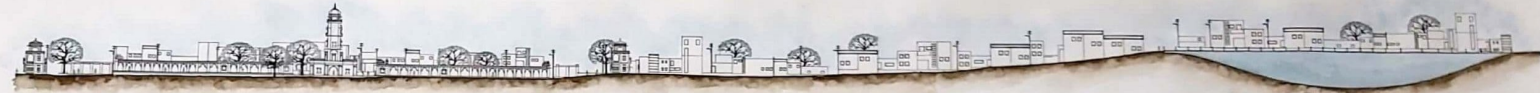
THIS STREET CONNECTS THE MAIN SPINE FROM  
MUSKELIN TO PROHIBITION TO VIKTOR CHOW.

section



THIS STREET CONNECTS THE TWO HIGHLIGHT POINTS OF THE SITE: VISUAL  
ACCESS TO PROPOSED LINE.

AS WELL AS THE EXISTING PERVIOUSLY UNCONNECTED TO THE OTHER STREET OF THE SITE.



SECTION FROM SARPAR MARKET TO GULAB SAGAR LAKE.



SECTION FROM MEHRANGARH FORT TO SARPAR MARKET.